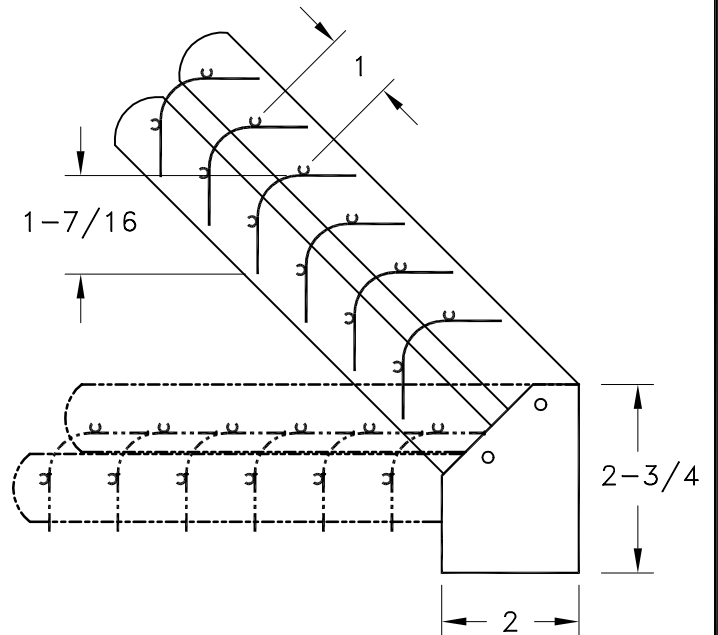
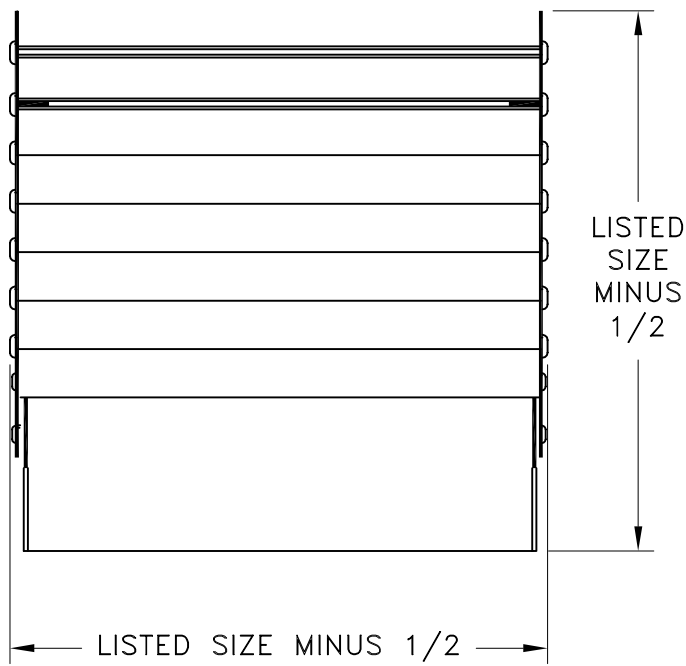


- EXTRUDED ALUMINUM CONSTRUCTION
- MOUNTS EASILY WITH SHEET METAL SCREWS
- GANG OPERATED BLADES MOVE FROM 45 DEGREES OPEN TO FULLY CLOSED
- MINIMUM SIZE: 6 X 4
- MAXIMUM SIZE: 36 X 18
- AVAILABLE IN 1 INCH INCREMENTS
- FINISH: MILL



JOB NAME: _____	SUBMITTED BY: _____	DATE: 8/14/98	SD-9139
LOCATION: _____	FT FLEXITURN Extruded Aluminum Air Turning Device		
ARCHITECT: _____			
ENGINEER: _____			
CONTRACTOR: _____			