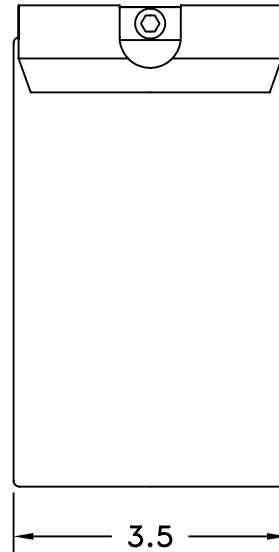
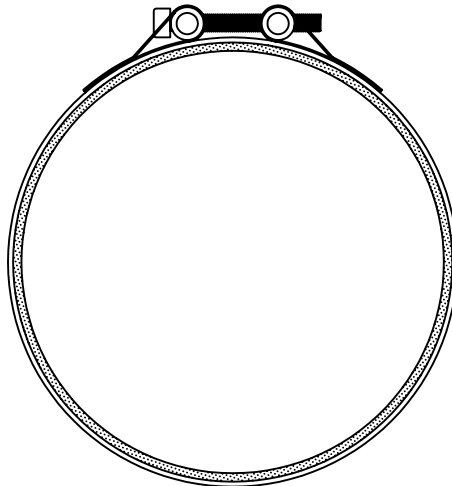
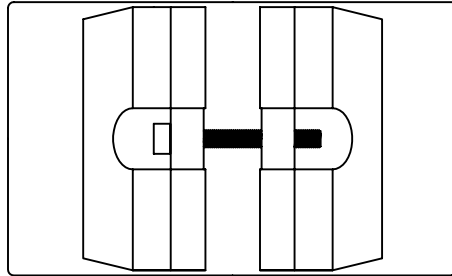


- COLLAR IS FORMED FROM 24 GAUGE GALVANIZED STEEL
- THE COLLAR IS LINED WITH A CLOSED CELL POLYETHYLENE GASKET
- ADJUST AND TIGHTEN COLLAR WITH THE HEX HEAD BOLT
- OFFERS A QUICK AND UNIQUE CONNECTION FOR ROUND DUCT
- TESTED UP TO +/- 30" WATER COLUMN
- REFERENCE CHART FOR PRODUCT OPTIONS



Product	Product Number
3" Quick Connect	QC03
4" Quick Connect	QC04
5" Quick Connect	QC05
6" Quick Connect	QC06
7" Quick Connect	QC07
8" Quick Connect	QC08
9" Quick Connect	QC09
10" Quick Connect	QC10
12" Quick Connect	QC12

JOB NAME: _____	SUBMITTED BY: _____	DATE: 4/30/03	SD-7042
LOCATION: _____		QC Quick Connect	
ARCHITECT: _____			
ENGINEER: _____			
CONTRACTOR: _____			