

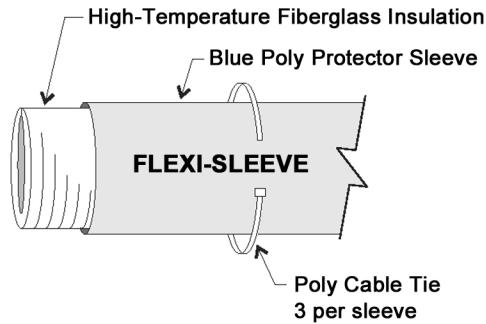
# Flexible Liner Sleeve

# Installation Instructions

## Installation and Protection Sleeve for Flexi-Liner Chimney Liners (Gas Applications Only)

PLEASE READ AND UNDERSTAND THE REQUIREMENTS BEFORE PROCEEDING

### Flexi-Sleeve (10' insulation)



### Installation Accessories: Flexible Leader Cone

### Application

Flexi-Sleeve is the only UL-listed insulation for use with the Flexi-Liner system.

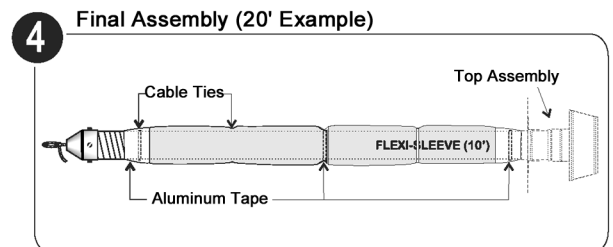
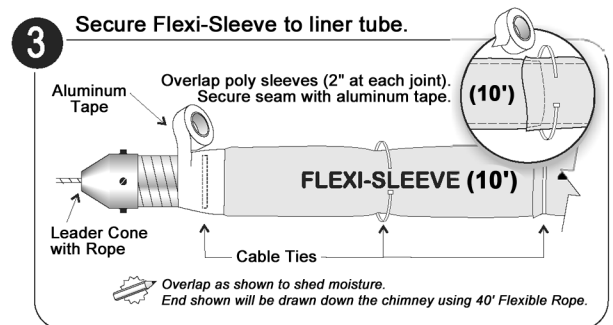
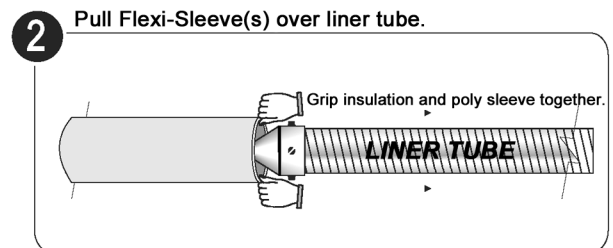
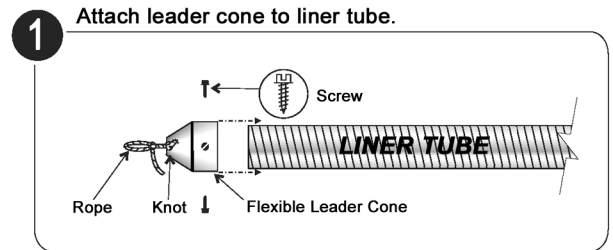
Laboratory testing has shown a flexible liner, combined with an insulation sleeve, exhibits the same heat-retention performance as Type B Vent.

If there is any doubt about the cleanliness of the chimney after sweeping, Flexi-Sleeve insulation should be used to help protect the liner from contamination.

Use Flexi-Sleeve to minimize condensation and down drafting, particularly if:

- The flue gas temperature is below 280°F at the entry point into the liner.
- Flexible Liner should be installed in an exterior or oversized chimney. An exterior chimney has one or more sides exposed to the outdoors.
- The liner system is venting only fan-assisted appliances.
- The masonry chimney contains solid- or liquid-fuel residue from prior heating appliances.
- The appliance is equipped with a vent damper.

### Installation Procedure



Hart & Cooley, Inc. 616.656.8200 p  
5030 Corporate Exchange Blvd. SE 616.656.6399 f  
Grand Rapids, MI 49512  
info@hartcool.com  
www.hartandcooley.com

