

# Model TLC

# Installation Instructions

Sheet  
**P**

## Chimney & Accessories

Guide to General Installation Instructions & Owner's Maintenance Guide

**Model TLC must be installed with a minimum 2-inch airspace clearance to combustible materials, wires and building insulation.**

### Insulated Pipe and Accessories

(See selector charts on reverse side.)

Insulated Pipe Length  
(6", 9", 12", 18", 24", 36")  
See Sheet GS



Roof Support Package  
See Sheet S-4



Roof Brace Kit  
(pipe not included)  
See Sheets GS, S-3



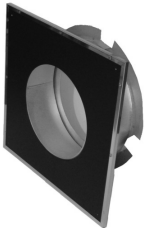
Wall Support  
See Sheets GS, S-5



Interior Resupport  
See Sheet S-5



Wall Thimble  
See Sheet S-7



Stovepipe Adapter  
with Coupler  
See Sheets GS, S-1, S-4



Insulated Tee &  
Insulated Tee Cap  
See Sheets GS, S-5



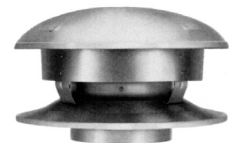
Wall Band  
See Sheet S-5



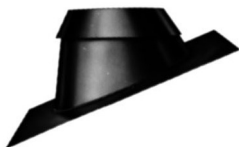
Attic Insulation  
Shield  
See Sheets GS, S-2



Deluxe Rain Cap  
(10", 12", 14")  
See Sheet S-3



Storm  
Collar  
Adjustable  
Flashing  
See Sheet S-3



Insulated  
15° Elbow  
See Sheets GS, S-5



Insulated  
30° Elbow  
See Sheets GS, S-5



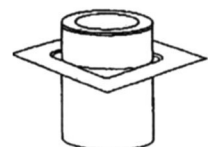
Ceiling Support  
See Sheet S-1



Anchor Plate  
See Sheet S-4



Firestop/  
Joist Shield  
See Sheet S-7



**IMPORTANT:**

The parts, kits, assemblies and packages shown here are essential for a correct and safe installation. They must be installed strictly in accordance with their applicable instructions. With some of these groups, two or more different instruction sheets may be necessary. The General Installation Instructions and Owner's Maintenance Guide is designated as Sheet GS, and is packaged with the support assembly. For your protection, read and study these carefully before beginning an installation. If you are installing these products and do not find the sheets referenced here in the cartons, STOP! and obtain them from your dealer, distributor or Hart & Cooley, Inc. before proceeding. The installation instruction reference sheets are indicated below the part illustration and must be followed to ensure safe installation.

**CAUTION:** MODEL TLC CHIMNEY SYSTEMS MUST BE PROPERLY SUPPORTED. DO NOT USE PIPE BY ITSELF OR ATTEMPT TO FABRICATE YOUR OWN SUPPORT OR ACCESSORIES. SEE INSTALLATION INSTRUCTIONS TO DETERMINE NECESSARY ACCESSORIES.

**⚠ WARNING**

Failure to follow these Installation Instructions could cause FIRE, CARBON MONOXIDE POISONING, OR DEATH. If you are unsure of installation requirements, call the phone number listed on the back of these instructions.



**Chimney Pipe Length Selector Chart**

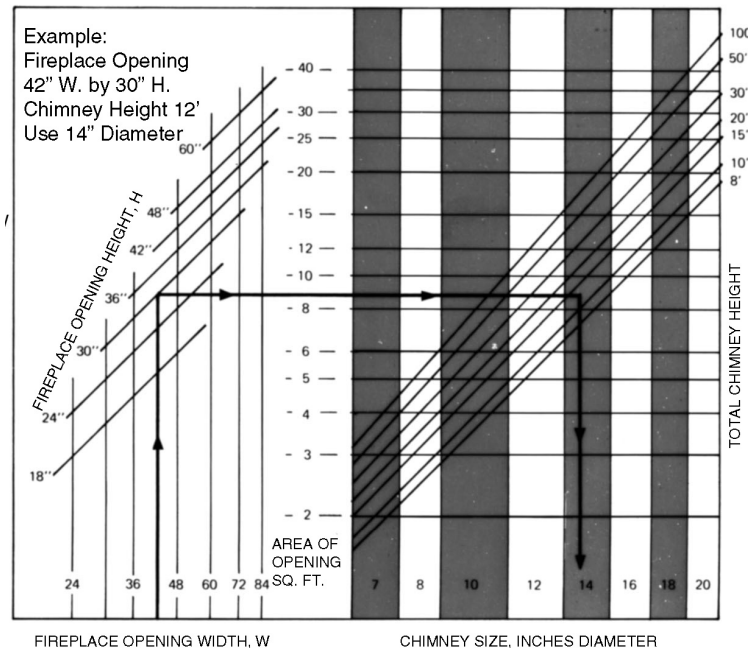
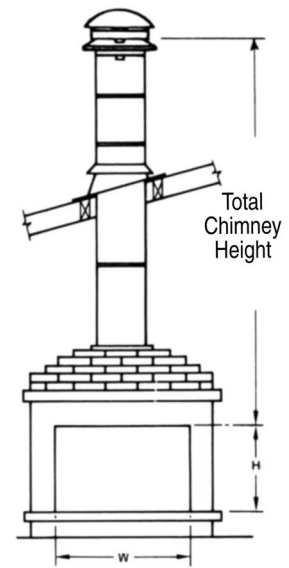
| Exact Length |                                 |                                  | Number of Chimney Sections |     |     | Exact Length |                                 |                                   | Number of Chimney Sections |     |     |
|--------------|---------------------------------|----------------------------------|----------------------------|-----|-----|--------------|---------------------------------|-----------------------------------|----------------------------|-----|-----|
| Feet         | Inches                          | Total Inches                     | 9"                         | 18" | 36" | Feet         | Inches                          | Total Inches                      | 9"                         | 18" | 36" |
| 1            | 10 <sup>1</sup> / <sub>4</sub>  | 10 <sup>1</sup> / <sub>4</sub>   | 1                          |     |     | 9            | 8 <sup>1</sup> / <sub>8</sub>   | 116 <sup>1</sup> / <sub>8</sub>   | 1                          |     | 3   |
| 2            | 6                               | 18                               |                            | 1   |     | 10           | 3 <sup>15</sup> / <sub>16</sub> | 123 <sup>15</sup> / <sub>16</sub> |                            | 1   | 3   |
| 3            | 3                               | 27                               | 1                          | 1   |     | 11           | 10 <sup>1</sup> / <sub>2</sub>  | 142 <sup>1</sup> / <sub>2</sub>   |                            |     | 4   |
| 3            | 9 <sup>9</sup> / <sub>16</sub>  | 36 <sup>9</sup> / <sub>16</sub>  |                            |     | 1   | 13           | 3 <sup>1</sup> / <sub>4</sub>   | 159 <sup>1</sup> / <sub>4</sub>   |                            | 1   | 4   |
| 3            | 9 <sup>9</sup> / <sub>16</sub>  | 45 <sup>9</sup> / <sub>16</sub>  | 1                          |     | 1   | 14           | 9 <sup>13</sup> / <sub>16</sub> | 177 <sup>13</sup> / <sub>16</sub> |                            |     | 5   |
| 4            | 5 <sup>5</sup> / <sub>16</sub>  | 53 <sup>5</sup> / <sub>16</sub>  |                            | 1   | 1   | 16           | 2 <sup>9</sup> / <sub>16</sub>  | 194 <sup>9</sup> / <sub>16</sub>  |                            | 1   | 5   |
| 5            | 2 <sup>5</sup> / <sub>16</sub>  | 62 <sup>5</sup> / <sub>16</sub>  | 1                          | 1   | 1   | 17           | 9 <sup>1</sup> / <sub>8</sub>   | 213 <sup>1</sup> / <sub>8</sub>   |                            |     | 6   |
| 5            | 11 <sup>7</sup> / <sub>8</sub>  | 71 <sup>7</sup> / <sub>8</sub>   |                            |     | 2   | 19           | 1 <sup>7</sup> / <sub>8</sub>   | 229 <sup>7</sup> / <sub>8</sub>   |                            | 1   | 6   |
| 6            | 8 <sup>7</sup> / <sub>8</sub>   | 80 <sup>7</sup> / <sub>8</sub>   | 1                          |     | 2   | 20           | 8 <sup>7</sup> / <sub>16</sub>  | 248 <sup>7</sup> / <sub>16</sub>  |                            |     | 7   |
| 7            | 4 <sup>5</sup> / <sub>8</sub>   | 88 <sup>5</sup> / <sub>8</sub>   |                            | 1   | 2   | 22           | 1 <sup>3</sup> / <sub>16</sub>  | 265 <sup>3</sup> / <sub>16</sub>  |                            | 1   | 7   |
| 8            | 1 <sup>5</sup> / <sub>8</sub>   | 97 <sup>5</sup> / <sub>8</sub>   | 1                          | 1   | 2   | 23           | 7 <sup>3</sup> / <sub>4</sub>   | 283 <sup>3</sup> / <sub>4</sub>   |                            |     | 8   |
| 8            | 11 <sup>3</sup> / <sub>16</sub> | 107 <sup>3</sup> / <sub>16</sub> |                            |     | 3   | 25           | 1 <sup>1</sup> / <sub>2</sub>   | 300 <sup>1</sup> / <sub>2</sub>   |                            | 1   | 8   |

**Minimum Chimney Heights for One Oil-Burning Appliance**  
10" to 14" Chimney Size

| Appliance Rating Input |                                  | Thousands of BTU/HR (GAL/HR) |                           | No. of Turns (Tees & Elbows) | Total Chimney Height Feet from Flue Outlet to Chimney Top |      |      |      |      |      |      |
|------------------------|----------------------------------|------------------------------|---------------------------|------------------------------|---|------|------|------|------|------|------|
| Model TLC Chimney Size |                                  | I/A BTU/Sq. In.              |                           |                              | Required Draft Inches of Water                            |      |      |      |      |      |      |
| 10"                    | 12"                              | 14"                          |                           |                              | .03   | .04  | .05  | .06  | .08  | .10  |      |
| up to 470<br>(3.35)    | up to 675<br>(4.8)               | up to 925<br>(6.6)           | 6,000                     | 0                            | 5.0   | 6.5  | 8.0  | 9.5  | 11.0 | 13.0 | 16.0 |
|                        |                                  |                              |                           | 1                            | 6.5   | 8.0  | 9.5  | 11.0 | 14.5 | 17.5 |      |
|                        |                                  |                              |                           | 2                            | 7.5   | 9.0  | 10.5 | 12.0 | 15.5 | 18.5 |      |
|                        |                                  |                              |                           | 3                            | 8.5   | 10.0 | 11.5 | 13.0 | 16.5 | 19.5 |      |
| 550<br>(3.9)           | 790<br>(5.65)                    | 1080<br>(7.7)                | 7,000                     | 0                            | 5.0   | 6.5  | 8.5  | 10.0 | 13.0 | 16.5 |      |
|                        |                                  |                              |                           | 1                            | 7.5   | 9.0  | 10.5 | 12.0 | 15.5 | 18.5 |      |
|                        |                                  |                              |                           | 2                            | 8.5   | 10.5 | 12.0 | 13.5 | 17.0 | 20.0 |      |
|                        |                                  |                              |                           | 3                            | 10.0  | 11.5 | 13.5 | 15.0 | 18.0 | 21.5 |      |
| 625<br>(4.5)           | 905<br>(6.45)                    | 1230<br>(8.8)                | 8,000                     | 0                            | 5.0   | 7.0  | 8.5  | 10.0 | 13.5 | 16.5 |      |
|                        |                                  |                              |                           | 1                            | 8.0   | 9.0  | 11.5 | 13.0 | 16.5 | 20.0 |      |
|                        |                                  |                              |                           | 2                            | 10.0  | 11.5 | 13.5 | 15.0 | 18.5 | 21.5 |      |
|                        |                                  |                              |                           | 3                            | 12.0  | 13.5 | 15.5 | 17.0 | 20.5 | 23.5 |      |
| 705<br>(5.05)          | 1015<br>(7.25)                   | 1385<br>(9.9)                | 9,000                     | 0                            | 5.5   | 7.0  | 9.0  | 10.5 | 14.0 | 17.5 |      |
|                        |                                  |                              |                           | 1                            | 9.0   | 11.0 | 12.5 | 14.0 | 17.5 | 21.0 |      |
|                        |                                  |                              |                           | 2                            | 11.5  | 13.5 | 15.0 | 16.5 | 20.0 | 23.5 |      |
|                        |                                  |                              |                           | 3                            | 14.0  | 16.0 | 17.5 | 19.0 | 22.5 | 26.0 |      |
| 785<br>(5.6)           | 1130<br>(8.1)                    | 1540<br>(11.0)               | 10,000                    | 0                            | 5.5   | 7.5  | 9.0  | 11.0 | 14.5 | 18.0 |      |
|                        |                                  |                              |                           | 1                            | 10.5  | 12.0 | 14.0 | 15.5 | 19.5 | 22.0 |      |
|                        |                                  |                              |                           | 2                            | 13.5  | 15.5 | 17.0 | 19.0 | 22.5 | 26.0 |      |
|                        |                                  |                              |                           | 3                            | 16.5  | 19.5 | 20.5 | 22.0 | 25.5 | 29.5 |      |
| 78                     | 113                              | 154                          | Flue Area Sq. In.         |                              |   |      |      |      |      |      |      |
| 14'                    | 16 <sup>1</sup> / <sub>2</sub> ' | 19'                          | Maximum Connector Length* |                              |   |      |      |      |      |      |      |

\*Doubling the connector length reduces input by 10%.

**NOTE:** For gas-fired appliances, see sizing tables in National Fuel Gas Code (NFPA 54).



**Chimney Size Chart for Fireplaces that may be Operated with Open Fronts**

For heaters and stoves burning wood or coal, see the appliance instructions, or use appliance outlet for the chimney.



Hart & Cooley, Inc. 616.656.8200 p  
5030 Corporate Exchange Blvd. SE 616.656.6399 f  
Grand Rapids, MI 49512  
info@hartcool.com  
www.hartandcooley.com