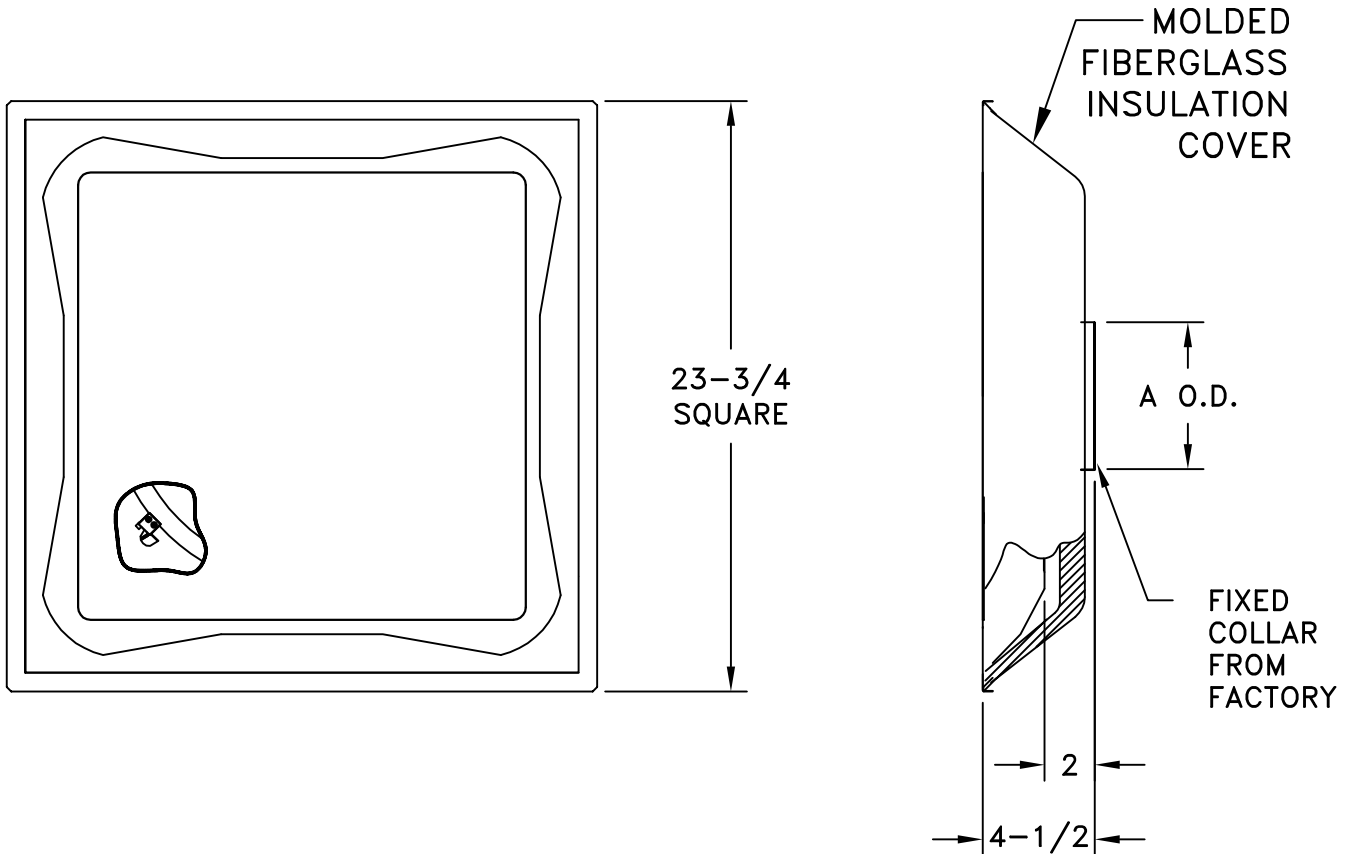


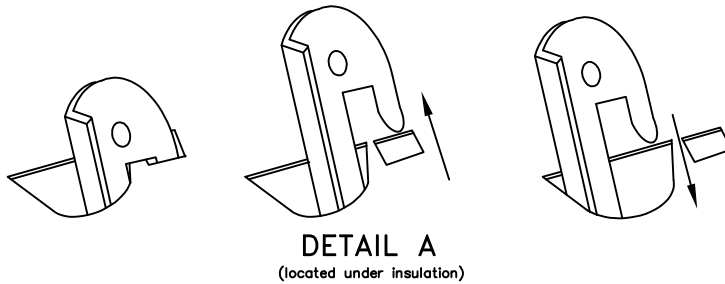
- ALL STEEL CONSTRUCTION
- MOLDED R6 FIBERGLASS INSULATION COVERS BACKPANEL
- FITS STANDARD 2' X 2' T-BAR CEILING SYSTEMS
- AVAILABLE IN 6-14 INCH FIXED COLLAR SIZES
- REMOVABLE FACE PLATE
- USE NO. 3800 STEEL BUTTERFLY DAMPER (PLATE MUST BE REMOVED)
- 360° PATTERN DELIVERY
- FINISH: WHITE (W) ENAMEL



**REMOVING FACE PLATE:**

1. REMOVE BLACK PUSH PINS FROM HOOKS.
2. PUSH THE FACE PLATE TOWARDS THE BACK PANEL. THIS WILL DIS-ENGAGE THE HOOKS FROM THE BACKSIDE PANEL SLOTS (DETAIL A).
3. ROTATE THE FACE PLATE COUNTER-CLOCKWISE AND PULL PLATE AWAY FROM BACK PANEL AND HOOKS THRU THE SLOTS.

| SIZE | A O.D. |
|------|--------|
| 6    | 5-7/8  |
| 8    | 7-7/8  |
| 10   | 9-7/8  |
| 12   | 11-7/8 |
| 14   | 13-7/8 |



|                   |                     |   |         |
|-------------------|---------------------|---|---------|
| JOB NAME: _____   | SUBMITTED BY: _____ | DATE: 2/18/08   | SD-9439 |
| LOCATION: _____   |                     | <b>DPD R6</b><br>Steel<br>Detachable Plate Diffuser<br>With R6 Insulation |         |
| ARCHITECT: _____  |                     |   |         |
| ENGINEER: _____   |                     |   |         |
| CONTRACTOR: _____ |                     |   |         |