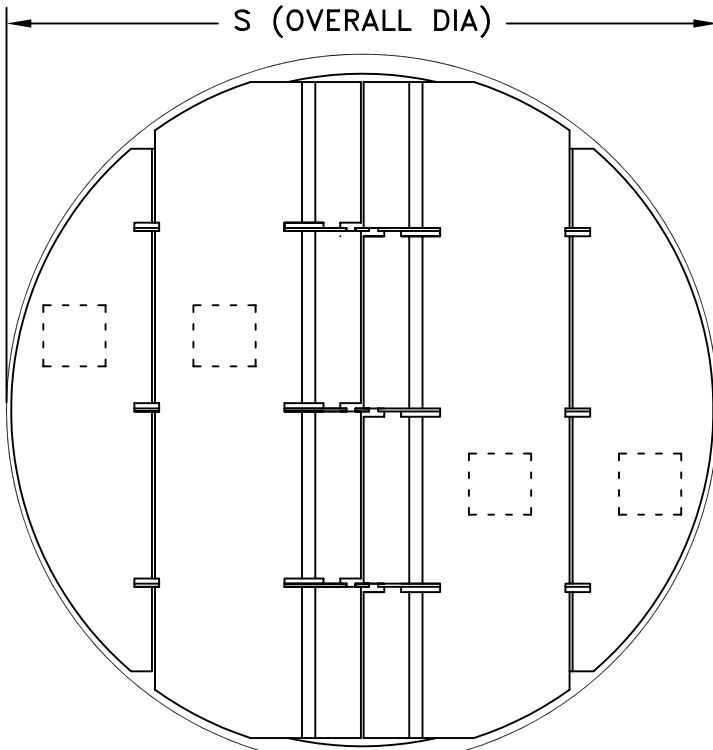
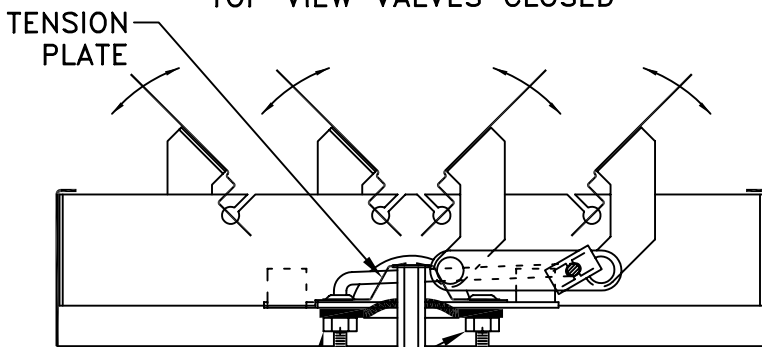
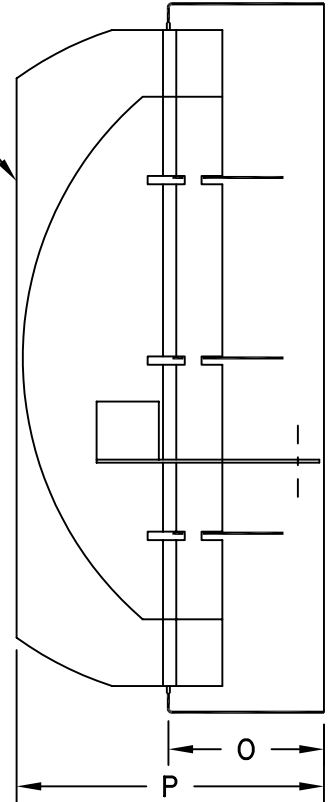


- STEEL CONSTRUCTION .035 THICK
- SCREW OR RIVET TO DUCT
- OPPOSED BLADE OPERATION
- AVAILABLE IN 6 – 18 INCH DIAMETERS
- FINISH: WHITE (W) ENAMEL



TOP VIEW VALVES CLOSED

OPPOSED
BLADE
DAMPER
VALVES
FULLY
OPEN



LOCK NUTS:
LOOSEN BEFORE
ADJUSTING DAMPER.
TIGHTEN AFTER ADJUSTING
DAMPER TO PROVIDE POSITIVE LOCK.

3/16 HEX OPERATOR
ROD (BY OTHERS)

CROSS SECTION WITH VALVES PARTLY OPEN
SHOWING OPPOSED BLADE OPERATION

IF OPERATOR IS TO BE REMOVED AFTER
SETTING DAMPER, DO NOT DRIVE INTO
TENSION PLATE AS THIS LOCKS ROD IN
PLACE FOR PERMANENT INSTALLATION

SIZE	S	O	P
6	5-15/16	1-3/4	3
8	7-15/16	1-3/4	3-1/2
10	9-15/16	1-3/4	4-9/16
12	11-15/16	1-3/4	4-9/16
14	13-15/16	1-3/4	4-9/16
15	14-15/16	1-3/4	4-9/16
16	15-15/16	1-3/4	4-9/16
18	17-15/16	1-3/4	4-9/16

JOB NAME: _____
LOCATION: _____
ARCHITECT: _____
ENGINEER: _____
CONTRACTOR: _____

SUBMITTED BY: _____

DATE: 4/15/04

SD-9226

19

Steel Opposed Blade
Volume Damper For
Round Neck Diffuser