

# Model SW

# Installation Instructions

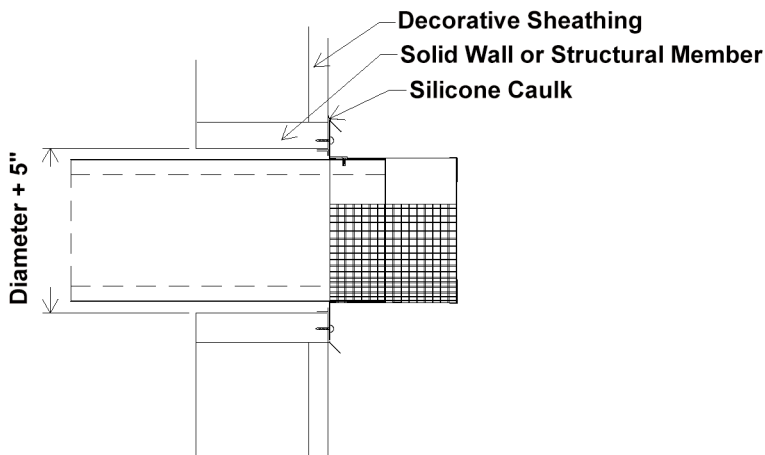
## Wall Penetration Assembly and Horizontal Termination

### PLEASE READ AND UNDERSTAND THE REQUIREMENTS BEFORE PROCEEDING

The Model SW system can be installed through any type of wall, using the Model SW vent wall penetration assembly. The wall penetration requires mechanical support from the wall, sufficient enough to support any incidental loads on the system. If the wall is not sufficient to support the penetration assembly, then appropriate additional framing and/or blocking is required.

### INSTALLATION PROCEDURE

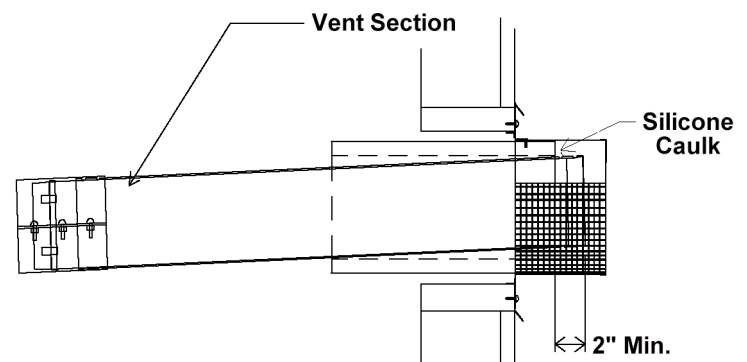
The wall penetration assembly is packed with the screen cover loosely slid over the inside end of the assembly. Before beginning, remove this screen cover. Prepare an opening for the wall penetration assembly in the wall. The opening must be 5 inches larger than the nominal diameter of the Model SW system when passing through combustible construction materials. The opening may be either round or square, as long as allowance for proper clearance to combustible material is made. When passing through solid, noncombustible construction, clearances may be reduced if necessary. If there are insufficient support members to secure the wall penetration assembly, or if there is a semirigid foam insulation layer under the sheathing, the opening must be blocked out or framed to provide support.



Position the wall penetration assembly into the enlarged hole from the outside. Secure the assembly into the prepared opening, using hollow wall anchors or wood screws as indicated by sheathing or structural members, sealing under the screw heads with caulking. (Use four hollow wall anchors at least 1/4\" in diameter and of an appropriate length for the thickness of the sheathing, if the sheathing is particle board or other composite material.

Use four #10 x 1/4\" wood screws for plywood or solid wood sheathing or solid wood members. Use suitable masonry anchors when passing through solid masonry walls. Additional fasteners may be used if desired.) Reinstall the decorative sheathing around the wall penetration assembly. The assembly may be painted to match the exterior decor.

Proceed with the installation of Model SW vent sections, and terminate it through the inside of the wall penetration assembly. The assembly is constructed to allow for 2 degrees (1/4\" per foot) of pitch in the vent sections. Seal the gap between the vent and the end plate of the termination, using Dow Corning 732, GE 106 or other silicone caulk suitable for extended exposure to the elements.



The vent section must protrude at least 2\" into the screened area beyond the end plate of the wall penetration assembly. Attach the screen cover, using the stainless screw(s). Align the hole in the top (solid) portion of the screen cover with the hole in the thimble assembly, and securely screw the two together. The screen cover may be easily removed for inspection of the venting system. If local conditions require, the exterior portion may be extended, using single-wall AL 29-4C stainless pipe to extend the screen cover, as long as the vent section extends 2\" into the screened area. Alternately, the screen cover may be removed and a Model SW screened mitre termination, or other terminal listed for use with specific appliances, may be utilized.



Hart & Cooley, Inc. 616.656.8200 p  
5030 Corporate Exchange Blvd. SE 616.656.6399 f  
Grand Rapids, MI 49512  
info@hartcool.com  
www.hartandcooley.com